



# DiskDeleter USB

## Quick User's Guide

### 1. About DiskDeleter USB

DiskDeleter USB 2.2.0 is a handy yet powerful tool to erase hard drive data completely.

You can carry the tiny tool of DiskDeleter USB and once plug it into a computer, you can delete all data including Windows completely just by following simple wizards.

With this powerful product, you can erase your hard drive data in two ways.

1. Run DiskDeleter on Windows (Windows XP/2000/2003): Just plug the DiskDeleter USB into your computer while Windows is running, and DiskDeleter wizard will automatically run from the USB (if it does not automatically run, please double click the drive (CDROM) or open the drive and double click DiskDeleter icon).

2. Run DiskDeleter by USB boot (DOS, Windows 3.x/95/98/ME/NT/2000/2003/XP, OS/2, and Intel based Linux/Unix) Just plug the DiskDeleter USB into your computer and power on your computer, and DiskDeleter wizard will automatically run from the USB.\*

**DiskDeleter USB is uniquely designed to be detected as USB CDROM by most computers\*. So even if your computer does not support USB boot, you can boot DiskDeleter from the USB device.**

\* Most of computers support CDROM (or USB CDROM) boot as a higher boot priority. If your computer's default of boot priority is not configured as such, you need to change the boot priority in the system BIOS before booting from DiskDeleter USB. Basically after power on a computer, there is a menu, for example to press Esc key to go to BIOS setting (Settings differ from one computer to another). For more information, please contact [customerservice@bluestsoft.com](mailto:customerservice@bluestsoft.com)

\* most computers: Intel x86 based systems

### 2. DiskDeleter USB functions:

- High Speed Deletion at 21sec/1GB\*
- View each byte of disk contents
- Securely delete hard disk data with 6 most important secure delete methods

1. Zero Write
2. Random Write
3. Random Random Zero
4. DOD 5220.22-M
5. NATO Standard
6. Peter Gutmann

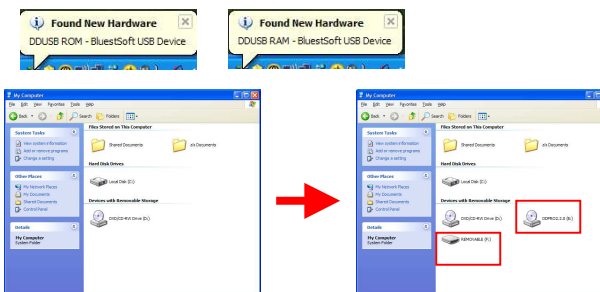
- ReFormat disk
- Save report on each of deleted disk. You can check the delete report by booting from the disk.
- Confirm the delete result by comparing disk contents of Before Delete and After Delete
- Easy to use wizard interface

\*Delete speed may vary depending on the configuration. The data is measured in the environment of Parallel IDE: WDC WD800JB 76,316MB, CPU: AMD Sempron 2200+, and Memory: 655,360K.

### 3. How to use DiskDeleter USB (How will it be seen?)

DiskDeleter USB is designed to be detected as a USB CDROM device and also a USB flash memory.

When you plug the DiskDeleter USB device on Windows it will be detected as below.



DDUSB ROM: Detected as a USB CDROM. In this example, you can access "DDPRO2.2.0 (E:)" as a USB CDROM drive. DiskDeleter software is embedded in DDUSB ROM. Once you plug the DiskDeleter USB device, DiskDeleter starts to run automatically, but if it does not automatically run, please double click this drive or open the drive and double click DiskDeleter icon.

DDUSB RAM: Detected as a normal USB flash memory. In this example, you can access "Removable (F:)" as a removable drive. This drive has no data and 111MB free space. As DiskDeleter does not use the drive, please feel free to use it as a USB memory.

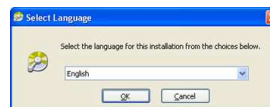
### 4. Run DiskDeleter on Windows (DiskDeleter Installation)

#### Language Selection Screen

After inserting DiskDeleter USB into your system while Windows is running, the Language Selection screen comes up.

Please select the language you want to use for the application.

TIPS: Once it runs, you can remove the USB device at any time and plug it in another computer for another deletion.



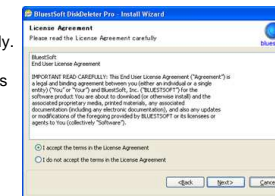
#### Welcome Screen

This is a welcome screen. Please make sure if you are running the application on the computer you want to discard. Once you delete disk data on the computer, the data cannot be recoverable. Please click Next button to go to the next screen.



### License Agreement

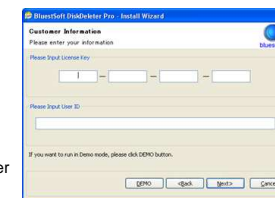
Please read the License Agreement carefully. If you accept the terms in the License Agreement, please select "I accept the terms in the License Agreement" and click Next button.



### Customer Information

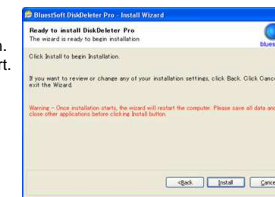
Please enter the License Key and User ID. The information had been provided by the email from BluestSoft after you purchased DiskDeleter. After you input the information, please click Next button to go to a next screen.

\* Enterprise version does not require to enter these information.



### Ready to install DiskDeleter

Now the wizard is ready to begin installation. If you click Install button, installation will start. If you still want to review or change any of your installation settings, please click Back button to review them.



### Installation completed

If the installation is successfully complete, this screen comes up. If you click Finish button, DiskDeleter will restart your computer and show a DiskDeleter Wizard menu. You can still return to Windows by selecting <Exit and Return to Windows>, if you do not want to proceed.

**Please remove the DiskDeleter USB device and click Finish button to restart your computer.**



Please go to the next process, "Run DiskDeleter by booting from USB"



BluestSoft, Inc. <http://www.bluestsoft.com>  
2102 Business Center Dr., Suite 130 Irvine, California 92612  
TEL: 949-253-5763  
FAX: 949-752-9316



# DiskDeleter USB

## Quick User's Guide

### 5. Run DiskDeleter by booting from USB

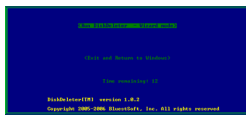
#### Main menu - DiskDeleter Wizard

After plugging the DiskDeleter USB device and power on, or restarting the computer after DiskDeleter installation, the DiskDeleter Wizard comes up.

Please use Up/Down or Tab key to select <Run DiskDeleter - Wizard mode> and press Enter key to run DiskDeleter.

If you want to return to Windows, please select <Exit and Return to Windows>.

**TIPS: Once it runs, you can remove the USB device at any time and plug it in another computer for another deletion.**



#### Disk Selection - DiskDeleter Wizard

Please use Right/Left or Tab key to move cursor in the listbox. In the listbox, please use Up and Down key to move cursor and press Space key to select disks you want to erase. If you want to check the disk contents, please press V key on a selected disk (see View Disk Contents - DiskDeleter Wizard). After you choose disks, please press Enter key or select <Next> to go to the next screen.



Delete: Selection [x] or Deselection [ ] of disks you want to erase

DiskNo: Disk Identification Number

Type: Device Type (Not supported by booting from USB)

Model: Manufacture and Model of Disk (Not supported by booting from USB)

Size(MB): Size of Disk

Partn: Number of Partition of Disk

FileSystem: File System of Disk

<Select All>: Select all disks in the listbox

<Back>: Go to previous screen [Hot key: B]

<Next>: Go to next screen [Hot key: N]

<Exit>: Exit the screen and go to main menu [Hot key: X]

<Help>: Show Help [Hot key: H]

#### View Disk Contents - DiskDeleter Wizard

This screen shows contents of the selected disk. Numeric values on the left indicate byte data and those ASCII data are displayed on the right.



Cyl: Input Cylinder number you want to check

Hd: Input Head number you want to check

Start: Go to the first sector on the disk

End: Go to the last sector on the disk

Prev: Go to a previous sector

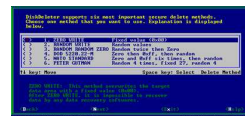
Forward: Go to a next sector

<Exit>: Exit the screen

#### Delete Methods - DiskDeleter Wizard

Please use Right/Left or Tab key to move cursor in the listbox, Top/Down key to move cursor to choose a delete method.

Level 1 is the fastest method and level 6 is the most powerful method. Please note that if you select higher level, it takes more time to complete the delete process. After choosing the delete method, please press Enter key or select <Next> to go to the next screen.



1. ZERO WRITE: This method overwrites the target data area with a fixed value (0x00).After ZERO WRITE, it is impossible to recover data by any data recovery softwares."

2. RANDOM WRITE: This method overwrites the target data area with random values.

3. RANDOM RANDOM ZERO: This method overwrites the target data area with random values twice, and then zero(0x00) once.

4. DOD 5220.22-M: Overwrites data area first by 0x00 once then by 0xff once, and finally random values once.

5. NATO STANDARD: Overwrites data area total seven times. First, overwrites with 0x00 and 0xff alternately six times, and then with random values once.

6. PETER GUTMANN: Overwrites data area with random values four times, fixed values 27 times and then random values four times. Total 35 writes.

<Back>: Go to previous screen [Hot key: B]

<Next>: Go to next screen [Hot key: N]

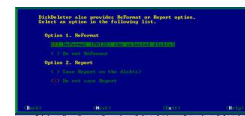
<Exit>: Exit the screen and go to main menu [Hot key: X]

<Help>: Show Help [Hot key: H]

#### Options - DiskDeleter Wizard

Please use Right/Left or Tab key to move cursor and select either ReFormat option or Report option. ReFormat will format the whole disk as FAT32 after deleting disk data so that the disk can be immediately detected and used in another computer. Report will save each report on a certain sector of each disk. You can check the delete report by booting from the disk. Please note that ReFormat and Report cannot coexist.

If you do not want to leave any data in the disk after deletion, please do not select any options (Default). Please press Enter key or select <Next> to go to the next screen.



<Back>: Go to previous screen [Hot key: B]

<Next>: Go to next screen [Hot key: N]

<Exit>: Exit the screen and go to main menu [Hot key: X]

<Help>: Show Help [Hot key: H]

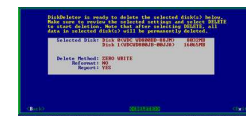
#### Confirmation - DiskDeleter Wizard

Please confirm the selected settings, use Right/Left or Tab key to move cursor and select <<DELETE>> to start deletion.

<Back>: Go to previous screen [Hot key: B]

<<DELETE>>: Proceed with DELETE

<Exit>: Exit the screen and go to main menu [Hot key: X]



#### Final Confirmation - DiskDeleter Wizard

This is the last confirmation. Please select <Yes> if you are ready to begin the actual delete process.

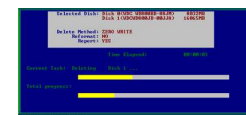
Please note that after selecting <Yes>, all data in selected disks will be permanently deleted.



#### Delete progress - DiskDeleter Wizard

This is a delete progress screen. "Current Task" shows currently working task and its progress bar. "Total Progress" shows total progress bar until completion.

If you understand that once delete process starts, the deleted data can not be recovered, and you even want to abort the process, please press DEL key.



After the delete process is completed, please select <Next> to go to Operation Summary.

#### Operation Summary - DiskDeleter Wizard

Please check the result of delete process in this screen.

Delete Method: Show the processed deleted method

Disk No: Disk Identification Number

Model: Manufacture and Model of Disk

Size(MB): Size of Disk

Delete: Completed or Aborted

Reformat: Completed, Aborted, or No (if not selected)

DiskError: Number of Disk Write Error



Please use Top/Down key and select a disk to show Before DELETE and After DELETE for verification of the process.

Please use Right/Left or Tab key to move cursor and select <Exit> to Exit.

Please note that if a boot disk is not deleted, selecting <Exit> will go to main menu and you can return to Windows by selecting <Exit and Return to Windows> in the main menu.

